

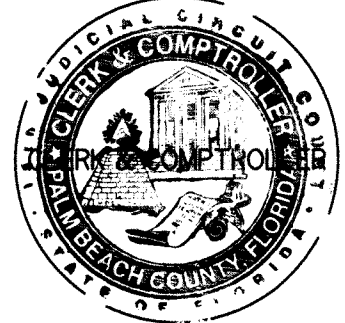
BRIDGES-MIZNER PUD - BRIDGES SOUTH PLAT FIVE

BEING A REPLAT OF A PORTION OF TRACT "E", BRIDGES-MIZNER PUD - BRIDGES SOUTH PLAT ONE, AS RECORDED IN PLAT BOOK 126, PAGES 46 THROUGH 62 OF THE PUBLIC RECORDS OF PALM BEACH COUNTY, FLORIDA, LYING IN SECTION 32, TOWNSHIP 46 SOUTH, RANGE 42 EAST, PALM BEACH COUNTY, FLORIDA

SHEET 1 OF 7

90

STATE OF FLORIDA
COUNTY OF PALM BEACH
THIS PLAT WAS FILED FOR RECORD AT 2:09 PM THIS 29th DAY OF October 2019 AND DULY RECORDED IN PLAT BOOK NO. 129, ON PAGE(S) 98-96
SHARON R. BOB, CLERK & COMPTROLLER
BY *[Signature]* D.C.



DEDICATION AND RESERVATIONS:

KNOW ALL MEN BY THESE PRESENTS THAT BOCA RATON ASSOCIATES VIII, L.L.P., A FLORIDA LIMITED LIABILITY LIMITED PARTNERSHIP, OWNER OF THE LAND SHOWN HEREON AS "BRIDGES-MIZNER PUD - BRIDGES SOUTH PLAT FIVE", BEING A REPLAT OF A PORTION OF TRACT "E", BRIDGES-MIZNER PUD - BRIDGES SOUTH PLAT ONE, AS RECORDED IN PLAT BOOK 126, PAGES 46 THROUGH 62 OF THE PUBLIC RECORDS OF PALM BEACH COUNTY, FLORIDA, LYING IN SECTION 32, TOWNSHIP 46 SOUTH, RANGE 42 EAST, PALM BEACH COUNTY, FLORIDA BEING MORE PARTICULARLY DESCRIBED AS FOLLOWS:

BEGIN AT THE NORTHEAST CORNER OF TRACT "L-6", SAID PLAT OF BRIDGES-MIZNER PUD - BRIDGES SOUTH PLAT ONE, THENCE NORTH 89°24'54" EAST, ALONG THE SOUTH LINE OF TRACT "OS1", SAID PLAT OF BRIDGES-MIZNER PUD - BRIDGES SOUTH PLAT ONE, A DISTANCE OF 1,588.00 FEET; THENCE SOUTH 00°35'06" EAST, A DISTANCE OF 188.10 FEET TO THE POINT OF CURVATURE OF A CURVE, CONCAVE EASTERLY, HAVING A RADIUS OF 1,000.00 FEET AND A CENTRAL ANGLE OF 03°53'54"; THENCE SOUTHERLY, ALONG THE ARC OF SAID CURVE TO THE LEFT, A DISTANCE OF 68.04 FEET TO A POINT OF TANGENCY; THENCE SOUTH 04°29'00" EAST, A DISTANCE OF 324.70 FEET TO THE POINT OF CURVATURE OF A CURVE, CONCAVE WESTERLY, HAVING A RADIUS OF 1,000.00 FEET AND A CENTRAL ANGLE OF 08°10'40"; THENCE SOUTHERLY, ALONG THE ARC OF SAID CURVE TO THE RIGHT, A DISTANCE OF 142.73 FEET TO A POINT OF TANGENCY; THENCE SOUTH 03°41'41" WEST, A DISTANCE OF 155.95 FEET TO THE POINT OF CURVATURE OF A CURVE, CONCAVE EASTERLY, HAVING A RADIUS OF 1,000.00 FEET AND A CENTRAL ANGLE OF 05°35'09"; THENCE SOUTHERLY, ALONG THE ARC OF SAID CURVE TO THE LEFT, A DISTANCE OF 97.49 FEET TO A POINT OF TANGENCY; THENCE SOUTH 01°53'28" EAST, A DISTANCE OF 246.66 FEET; THENCE SOUTH 88°37'37" WEST, A DISTANCE OF 255.66 FEET TO THE POINT OF CURVATURE OF A CURVE, CONCAVE NORTHERLY, HAVING A RADIUS OF 1,940.00 FEET AND A CENTRAL ANGLE OF 01°31'05"; THENCE ALONG THE NORTH LINE OF BRIDGES-MIZNER PUD - BRIDGES SOUTH PLAT THREE, AS RECORDED IN PLAT BOOK 126, PAGE 32, OF SAID PUBLIC RECORDS FOR THE FOLLOWING NINE (9) DESCRIBED COURSES, AND WESTERLY, ALONG THE ARC OF SAID CURVE TO THE RIGHT, A DISTANCE OF 51.40 FEET TO THE POINT OF INTERSECTION WITH A NON-TANGENT LINE; THENCE NORTH 88°56'43" WEST, A DISTANCE OF 61.22 FEET TO A POINT OF NON-TANGENT INTERSECTION WITH A CURVE, FROM WHICH A RADIAL LINE BEARS NORTH 01°57'32" EAST, CONCAVE NORTHERLY, HAVING A RADIUS OF 1,940.00 FEET AND A CENTRAL ANGLE OF 08°28'28"; THENCE WESTERLY, ALONG THE ARC OF SAID CURVE TO THE RIGHT, A DISTANCE OF 286.94 FEET TO A POINT OF TANGENCY; THENCE NORTH 79°34'00" WEST, A DISTANCE OF 55.59 FEET TO THE POINT OF CURVATURE OF A CURVE, CONCAVE SOUTHERLY, HAVING A RADIUS OF 2,560.00 FEET AND A CENTRAL ANGLE OF 02°50'53"; THENCE WESTERLY, ALONG THE ARC OF SAID CURVE TO THE LEFT, A DISTANCE OF 127.26 FEET TO THE POINT OF INTERSECTION WITH A NON-TANGENT LINE; THENCE NORTH 82°7'59" WEST, A DISTANCE OF 49.28 FEET TO THE POINT OF NON-TANGENT INTERSECTION WITH A CURVE, FROM WHICH A RADIAL LINE BEARS SOUTH 06°28'56" WEST, CONCAVE SOUTHERLY, HAVING A RADIUS OF 2,560.00 FEET AND A CENTRAL ANGLE OF 01°52'45"; THENCE WESTERLY, ALONG THE ARC OF SAID CURVE TO THE LEFT, A DISTANCE OF 83.96 FEET TO A POINT OF TANGENCY; THENCE NORTH 85°29'49" WEST, A DISTANCE OF 442.90 FEET TO THE POINT OF CURVATURE OF A CURVE, CONCAVE SOUTHERLY, HAVING A RADIUS OF 2,060.00 FEET AND A CENTRAL ANGLE OF 02°06'01"; THENCE WESTERLY, ALONG THE ARC OF SAID CURVE TO THE LEFT, A DISTANCE OF 75.51 FEET TO THE POINT OF INTERSECTION WITH A NON-TANGENT LINE; THENCE NORTH 34°29'06" WEST, ALONG THE EAST LINE OF TRACT "OS2", SAID PLAT OF BRIDGES-MIZNER PUD - BRIDGES SOUTH PLAT ONE, A DISTANCE OF 57.28 FEET TO THE POINT OF NON-RADIAL INTERSECTION WITH A CURVE, FROM WHICH A RADIAL LINE BEARS NORTH 37°52'11" WEST, CONCAVE NORTHWESTERLY, HAVING A RADIUS OF 50.00 FEET AND A CENTRAL ANGLE OF 50°35'49"; THENCE ALONG THE EAST LINE OF SAID TRACT "L-6", FOR THE FOLLOWING SIX (6) COURSES, NORTHEASTERLY, ALONG THE ARC OF SAID CURVE TO THE LEFT, A DISTANCE OF 49.39 FEET TO A POINT OF TANGENCY; THENCE NORTH 04°27'59" WEST, A DISTANCE OF 109.15 FEET TO THE POINT OF CURVATURE OF A CURVE, CONCAVE WESTERLY, HAVING A RADIUS OF 2,500.00 FEET AND A CENTRAL ANGLE OF 06°21'57"; THENCE NORTHERLY, ALONG THE ARC OF SAID CURVE TO THE LEFT, A DISTANCE OF 277.76 FEET TO A POINT OF TANGENCY; THENCE NORTH 10°49'56" WEST, A DISTANCE OF 292.66 FEET TO THE POINT OF CURVATURE OF A CURVE, CONCAVE EASTERLY, HAVING A RADIUS OF 991.00 FEET AND A CENTRAL ANGLE OF 10°14'50"; THENCE NORTHERLY, ALONG THE ARC OF SAID CURVE TO THE RIGHT, A DISTANCE OF 177.24 FEET TO A POINT OF TANGENCY; THENCE NORTH 00°35'06" WEST, A DISTANCE OF 157.80 FEET TO THE POINT OF BEGINNING.

CONTAINING 41.517 ACRES, MORE OR LESS.

ALL OF THE ABOVE SAID LANDS SITUATE, LYING AND BEING IN PALM BEACH COUNTY, FLORIDA, HAVE CAUSED THE SAME TO BE SURVEYED AND PLATTED AS SHOWN HEREON AND DO HEREBY DEDICATE AS FOLLOWS:

- TRACT "A", AS SHOWN HEREON, IS HEREBY RESERVED FOR THE LOTUS HOMEOWNERS ASSOCIATION, INC., ITS SUCCESSORS AND ASSIGNS, FOR PRIVATE STREET PURPOSES AND OTHER PURPOSES NOT INCONSISTENT WITH THIS RESERVATION AND IS THE PERPETUAL MAINTENANCE OBLIGATION OF SAID ASSOCIATION, ITS SUCCESSORS AND ASSIGNS, WITHOUT RECOURSE TO PALM BEACH COUNTY.
- TRACT "B", AS SHOWN HEREON, IS HEREBY RESERVED FOR THE LOTUS HOMEOWNERS ASSOCIATION, INC., ITS SUCCESSORS AND ASSIGNS, AS RESIDENTIAL ACCESS STREETS FOR PRIVATE STREET PURPOSES AND OTHER PURPOSES NOT INCONSISTENT WITH THIS RESERVATION AND IS THE PERPETUAL MAINTENANCE OBLIGATION OF SAID ASSOCIATION, ITS SUCCESSOR AND ASSIGNS, WITHOUT RECOURSE TO PALM BEACH COUNTY.
- TRACTS "OS1" THROUGH "OS10", AS SHOWN HEREON, ARE HEREBY RESERVED FOR THE LOTUS HOMEOWNERS ASSOCIATION, INC., ITS SUCCESSORS AND ASSIGNS, FOR OPEN SPACE PURPOSES AND ARE THE PERPETUAL MAINTENANCE OBLIGATION OF SAID ASSOCIATION, ITS SUCCESSORS AND ASSIGNS, WITHOUT RECOURSE TO PALM BEACH COUNTY.
- ALL TRACTS FOR PRIVATE STREET PURPOSES, AS SHOWN HEREON ARE HEREBY SUBJECT TO AN OVERLAYING NON-EXCLUSIVE EASEMENT DEDICATED IN PERPETUITY TO THE PUBLIC FOR THE INSTALLATION, OPERATION, MAINTENANCE AND REPLACEMENT OF UTILITIES, BOTH PUBLIC AND PRIVATE, INCLUDING, BUT NOT LIMITED TO STORMWATER FACILITIES, POTABLE WATER PIPELINES, RAW WATER PIPELINES, WASTEWATER PIPELINES, RECLAIMED WATER PIPELINES, ELECTRIC POWER LINES, TELECOMMUNICATION LINES, CABLE TELEVISION LINES, GAS LINES, AND RELATED APPURTENANCES. THE INSTALLATION OF CABLE TELEVISION SYSTEMS SHALL NOT INTERFERE WITH THE CONSTRUCTION AND MAINTENANCE OF OTHER UTILITIES. IN THE EVENT A CABLE TELEVISION COMPANY DAMAGES THE FACILITIES OF A PUBLIC UTILITY, IT SHALL BE SOLELY RESPONSIBLE FOR THE DAMAGES. IF OTHERWISE APPROVED BY PALM BEACH COUNTY, NO BUILDINGS, STRUCTURES, IMPROVEMENTS, TREES, WALLS OR FENCES SHALL BE INSTALLED WITHIN THESE TRACTS WITHOUT THE PRIOR WRITTEN APPROVAL OF THE PALM BEACH COUNTY WATER UTILITIES DEPARTMENT, ITS SUCCESSORS AND ASSIGNS.

DEDICATION AND RESERVATIONS (CONTINUED)

- TRACTS "L7", "L8" AND "L12", AS SHOWN HEREON, ARE HEREBY RESERVED FOR THE LOTUS HOMEOWNERS ASSOCIATION, INC., ITS SUCCESSORS AND ASSIGNS, FOR STORMWATER MANAGEMENT AND DRAINAGE PURPOSES AND ARE THE PERPETUAL MAINTENANCE OBLIGATION OF SAID ASSOCIATION, ITS SUCCESSORS AND ASSIGNS, WITHOUT RECOURSE TO PALM BEACH COUNTY, AND ARE SUBJECT TO AN EXISTING LITTORAL ZONE RESTRICTIVE COVENANT AGREEMENT AS RECORDED IN OFFICIAL RECORDS BOOK 3076, PAGE 1232, PUBLIC RECORDS OF PALM BEACH COUNTY, FLORIDA.
- MAINTENANCE AND ROOF OVERHANG EASEMENTS ARE HEREBY RESERVED IN PERPETUITY TO THE OWNER OF THE LOT ABUTTING THE EASEMENT AND THE LOTUS HOMEOWNERS ASSOCIATION, INC., ITS SUCCESSORS AND ASSIGNS FOR THE PURPOSE OF ACCESS TO AND MAINTENANCE OF IMPROVEMENTS, THE ROOF OVERHANG, EAVE, GUTTERS, DRAINAGE AND UTILITY SERVICES, DECORATIVE ARCHITECTURAL TREATMENT, AND IMPACT SHUTTERS, WITHIN AND ADJACENT TO SAID EASEMENT WITHOUT RECOURSE TO PALM BEACH COUNTY.
- THE DRAINAGE EASEMENTS, AS SHOWN HEREON, ARE HEREBY DEDICATED IN PERPETUITY FOR DRAINAGE PURPOSES. THE MAINTENANCE OF ALL DRAINAGE FACILITIES LOCATED THEREIN SHALL BE THE PERPETUAL MAINTENANCE OBLIGATION OF SAID ASSOCIATION, ITS SUCCESSORS AND ASSIGNS, WITHOUT RECOURSE TO PALM BEACH COUNTY.

THE LAKE MAINTENANCE EASEMENTS AND LAKE MAINTENANCE ACCESS EASEMENTS, AS SHOWN HEREON, ARE HEREBY RESERVED FOR THE LOTUS HOMEOWNERS ASSOCIATION, INC., ITS SUCCESSORS AND ASSIGNS, FOR STORMWATER MANAGEMENT AND DRAINAGE FACILITIES LOCATED WITHIN THE ASSOCIATED WATER MANAGEMENT TRACTS FOR PURPOSES OF PERFORMING ANY AND ALL MAINTENANCE ACTIVITIES PURSUANT TO THE MAINTENANCE OBLIGATION OF SAID ASSOCIATION, ITS SUCCESSORS AND ASSIGNS, WITHOUT RECOURSE TO PALM BEACH COUNTY.

PALM BEACH COUNTY SHALL HAVE THE RIGHT, BUT NOT THE OBLIGATION, TO CONSTRUCT AND MAINTAIN ANY PORTION OF THE DRAINAGE SYSTEM ENCOMPASSED BY THIS PLAT WHICH IS ASSOCIATED WITH THE DRAINAGE OF PUBLIC STREETS, INCLUDING THE RIGHT TO UTILIZE FOR PROPER PURPOSES ANY AND ALL DRAINAGE, LAKE MAINTENANCE, AND LAKE MAINTENANCE ACCESS EASEMENTS AND PRIVATE STREETS ASSOCIATED WITH SAID DRAINAGE SYSTEM.

- THE UTILITY EASEMENTS RUNNING ADJACENT AND PARALLEL TO THE TRACTS FOR PRIVATE ROAD PURPOSES, AS SHOWN HEREON, ARE NON-EXCLUSIVE EASEMENTS AND ARE HEREBY DEDICATED IN PERPETUITY TO THE PUBLIC FOR THE INSTALLATION, OPERATION, MAINTENANCE, REPAIR, EXPANSION AND REPLACEMENT OF UTILITIES, BOTH PUBLIC AND PRIVATE, INCLUDING, BUT NOT LIMITED TO, POTABLE WATER PIPELINES, RAW WATER PIPELINES, WASTEWATER PIPELINES, RECLAIMED WATER PIPELINES, ELECTRIC POWER LINES, TELECOMMUNICATION LINES, CABLE TELEVISION LINES, GAS LINES, AND RELATED APPURTENANCES. THE INSTALLATION OF CABLE TELEVISION SYSTEMS SHALL NOT INTERFERE WITH THE CONSTRUCTION AND MAINTENANCE OF OTHER UTILITIES. IN THE EVENT A CABLE TELEVISION COMPANY DAMAGES THE FACILITIES OF A PUBLIC UTILITY, IT SHALL BE SOLELY RESPONSIBLE FOR THE DAMAGES. IF OTHERWISE APPROVED BY PALM BEACH COUNTY, NO BUILDINGS, STRUCTURES, IMPROVEMENTS, TREES, WALLS OR FENCES SHALL BE INSTALLED WITHIN THESE EASEMENTS WITHOUT THE PRIOR WRITTEN APPROVAL OF THE PALM BEACH COUNTY WATER UTILITIES DEPARTMENT, ITS SUCCESSORS AND ASSIGNS.

- THE PALM BEACH COUNTY UTILITY EASEMENTS IDENTIFIED ON THE PLAT HEREON ARE EXCLUSIVE EASEMENTS AND ARE HEREBY DEDICATED IN PERPETUITY TO PALM BEACH COUNTY, ITS SUCCESSORS AND ASSIGNS, FOR THE INSTALLATION, OPERATION, MAINTENANCE, REPAIR, EXPANSION AND REPLACEMENT OF POTABLE WATER PIPELINES, RAW WATER PIPELINES, WASTEWATER PIPELINES, RECLAIMED WATER PIPELINES, AND RELATED APPURTENANCES. THE MAINTENANCE OF THE LAND UNDERLYING THESE EASEMENTS SHALL BE A PERPETUAL OBLIGATION OF THE PROPERTY OWNER. IF OTHERWISE APPROVED BY PALM BEACH COUNTY, NO BUILDINGS, STRUCTURES, IMPROVEMENTS, TREES, WALLS OR FENCES SHALL BE INSTALLED WITHIN THESE EASEMENTS WITHOUT THE PRIOR WRITTEN APPROVAL OF THE PALM BEACH COUNTY WATER UTILITIES DEPARTMENT, ITS SUCCESSORS AND ASSIGNS.

IN WITNESS WHEREOF, THE ABOVE NAMED LIMITED LIABILITY LIMITED PARTNERSHIP HAS CAUSED THESE PRESENTS TO BE SIGNED BY ITS GENERAL PARTNER, BOCA RATON VIII CORPORATION, A FLORIDA CORPORATION, LICENSED TO DO BUSINESS IN FLORIDA, THIS 1st DAY OF July 2019.

BOCA RATON ASSOCIATES VIII, L.L.P., A FLORIDA LIMITED LIABILITY LIMITED PARTNERSHIP
BY: *[Signature]*, V.P.
ALAN FANT, VICE PRESIDENT

WITNESS: *[Signature]* WITNESS: *[Signature]*
PRINT NAME: SHARON R. BOB PRINT NAME: Rebecca C. Medley

ACKNOWLEDGMENT

STATE OF FLORIDA
COUNTY OF BROWARD

BEFORE ME PERSONALLY APPEARED ALAN FANT, WHO IS PERSONALLY KNOWN TO ME OR HAS PRODUCED AS IDENTIFICATION, AND WHO EXECUTED THE FOREGOING INSTRUMENT AS VICE PRESIDENT OF BOCA RATON VIII, CORPORATION, A FLORIDA CORPORATION, GENERAL PARTNER OF BOCA RATON ASSOCIATES VIII, L.L.P., AND SEVERALLY ACKNOWLEDGED TO AND BEFORE ME THAT HE EXECUTED SUCH INSTRUMENT AS SUCH OFFICER OF SAID CORPORATION, AND THAT THE SEAL AFFIXED TO THE FOREGOING INSTRUMENT IS THE CORPORATE SEAL OF SAID CORPORATION AND THAT IT WAS AFFIXED TO SAID INSTRUMENT BY DUE AND REGULAR CORPORATE AUTHORITY, AND THAT SAID INSTRUMENT IS THE FREE ACT AND DEED OF SAID CORPORATION.

WITNESS MY HAND AND OFFICIAL SEAL THIS 1st DAY OF July 2019.

NOTARY PUBLIC: *[Signature]*
PRINT NAME: Rebecca C. Medley
MY COMMISSION EXPIRES: 5/14/2022 COMMISSION NUMBER: GG-192428

ACCEPTANCE OF RESERVATIONS

STATE OF FLORIDA
COUNTY OF PALM BEACH

THE LOTUS HOMEOWNERS ASSOCIATION, INC., HEREBY ACCEPTS THE DEDICATIONS AND RESERVATIONS TO SAID ASSOCIATION AS STATED AND SHOWN HEREON, AND HEREBY ACCEPTS ITS MAINTENANCE OBLIGATIONS FOR SAME AS STATED HEREON, DATED THIS 2nd DAY OF July 2019.

LOTUS HOMEOWNERS ASSOCIATION, INC., A FLORIDA LIMITED LIABILITY LIMITED PARTNERSHIP
BY: *[Signature]*
KARA BARCOCK, PRESIDENT
WITNESS: *[Signature]* WITNESS: *[Signature]*
PRINT NAME: NICOLE DIGIROLAMO PRINT NAME: K. SWENSON

ACKNOWLEDGMENT

STATE OF FLORIDA
COUNTY OF PALM BEACH

BEFORE ME PERSONALLY APPEARED KARA BARCOCK, WHO IS PERSONALLY KNOWN TO ME OR HAS PRODUCED AS IDENTIFICATION, AND WHO EXECUTED THE FOREGOING INSTRUMENT AS PRESIDENT OF THE LOTUS HOMEOWNERS ASSOCIATION, INC., AND SEVERALLY ACKNOWLEDGED TO AND BEFORE ME THAT SHE EXECUTED SUCH INSTRUMENT AS SUCH OFFICER OF SAID CORPORATION AND THAT THE SEAL AFFIXED TO THE FOREGOING INSTRUMENT IS THE CORPORATE SEAL OF SAID CORPORATION AND THAT IT WAS AFFIXED TO SAID INSTRUMENT BY DUE AND REGULAR CORPORATE AUTHORITY, AND THAT SAID INSTRUMENT IS THE FREE ACT AND DEED OF SAID CORPORATION. WITNESS MY HAND AND OFFICIAL SEAL THIS 2nd DAY OF July 2019.

NOTARY PUBLIC: *[Signature]*
PRINT NAME: Pamela A. DeShaney
MY COMMISSION EXPIRES: 3/31/21 COMMISSION NUMBER: GG099919

TITLE CERTIFICATION

STATE OF FLORIDA
COUNTY OF BROWARD

WE, FIDELITY NATIONAL TITLE INSURANCE COMPANY, A TITLE INSURANCE COMPANY, AS DULY AUTHORIZED TO DO BUSINESS IN THE STATE OF FLORIDA, DO HEREBY CERTIFY THAT WE HAVE EXAMINED THE TITLE TO THE HEREON DESCRIBED PROPERTY; THAT WE FIND THE TITLE TO THE PROPERTY IS VESTED IN BOCA RATON ASSOCIATES VIII, L.L.P., A FLORIDA LIMITED LIABILITY LIMITED PARTNERSHIP; THAT THE CURRENT TAXES HAVE BEEN PAID; AND THAT ALL PALM BEACH COUNTY SPECIAL ASSESSMENT ITEMS, AND ALL OTHER ITEMS HELD AGAINST SAID LANDS HAVE BEEN SATISFIED; THAT THERE ARE NO MORTGAGES OF RECORD; AND THAT THERE ARE ENCUMBRANCES OF RECORD BUT THOSE ENCUMBRANCES DO NOT PROHIBIT THE CREATION OF THE SUBDIVISION DEPICTED BY THIS PLAT.

FIDELITY NATIONAL TITLE INSURANCE COMPANY
A FLORIDA CORPORATION
BY: *[Signature]*
GEORGE TELLEZ, VICE-PRESIDENT
DATE: 8-29-2019

COUNTY APPROVAL

THIS PLAT IS HEREBY APPROVED FOR RECORD PURSUANT TO PALM BEACH COUNTY ORDINANCE 95-33, AND IN ACCORDANCE WITH SECTION 177.07(2), FLORIDA STATUTES, THIS 29th DAY OF August 2019, AND HAS BEEN REVIEWED BY A PROFESSIONAL SURVEYOR & MAPPER EMPLOYED BY PALM BEACH COUNTY IN ACCORDANCE WITH SECTION 177.08(1)(F) FLORIDA STATUTES.

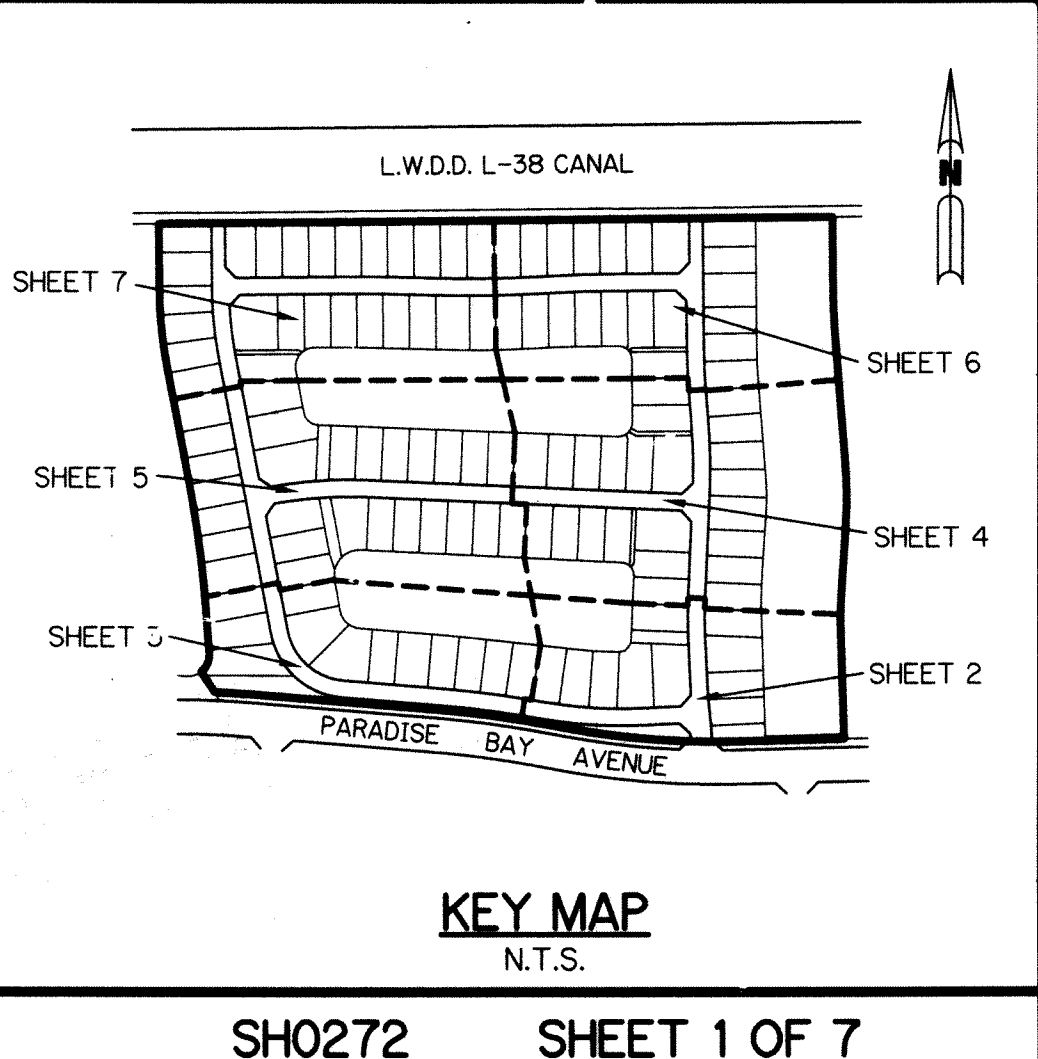
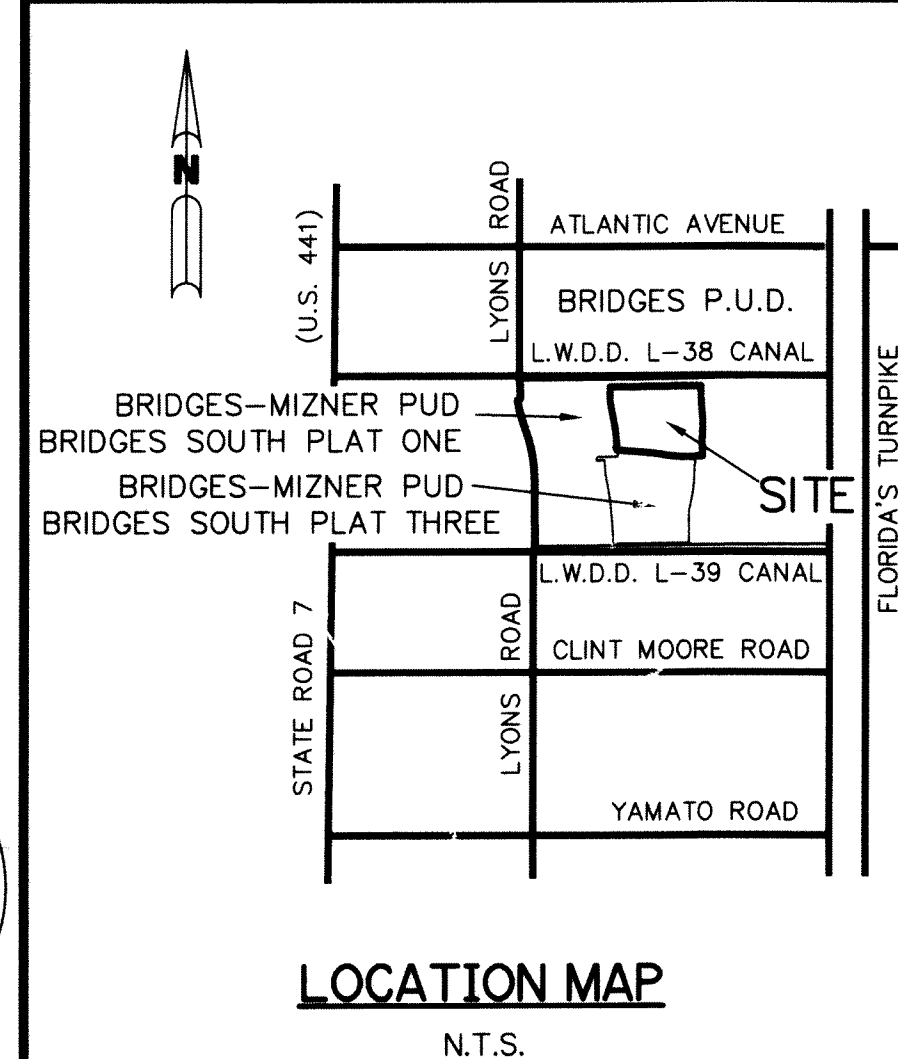
BY: *[Signature]*
DAVID L. RICKS, P.E.
COUNTY ENGINEER

SURVEYOR & MAPPER'S CERTIFICATE

THIS IS TO CERTIFY THAT THE PLAT SHOWN HEREON IS A TRUE AND CORRECT REPRESENTATION OF A SURVEY MADE UNDER MY RESPONSIBLE DIRECTION AND SUPERVISION; THAT SAID SURVEY IS ACCURATE TO THE BEST OF MY KNOWLEDGE AND BELIEF; THAT PERMANENT REFERENCE MONUMENTS ("P.R.M.'S") HAVE BEEN PLACED AS REQUIRED BY LAW AND THAT PERMANENT CONTROL POINTS ("C.P.'S") AND MONUMENTS ACCORDING TO SEC. 177.091 (9) F.S., WILL BE SET UNDER THE GUARANTEES POSTED WITH THE PALM BEACH COUNTY BOARD OF COUNTY COMMISSIONERS FOR THE REQUIRED IMPROVEMENTS; AND, FURTHER, THAT THE SURVEY DATA COMPLIES WITH ALL THE REQUIREMENTS OF CHAPTER 177, FLORIDA STATUTES, AS AMENDED, AND THE ORDINANCES OF PALM BEACH COUNTY, FLORIDA.

BY: *[Signature]* DATE: 8/21/2019
PERRY C. WHITE,
PROFESSIONAL SURVEYOR AND MAPPER
LICENSE NO. 4213, STATE OF FLORIDA

SITE PLAN DATA
BRIDGES SOUTH PUD K - PLAT FIVE
CONTROL NO. 2004-00250



THIS INSTRUMENT WAS PREPARED BY
PERRY C. WHITE, P.S.M. 4213,
STATE OF FLORIDA
SAND & HILLS SURVEYING, INC.
8461 LAKE WORTH ROAD, SUITE 410
LAKE WORTH, FLORIDA 33467 LB-7741

SURVEYOR BOCA RATON VIII CORPORATION COUNTY ENGINEER LOTUS HOMEOWNERS ASSOCIATION, INC.